

MONTHLY MEMBERSHIP PROGRESS REPORT

District A 5

Results as of: 4/30/2026

GMT:

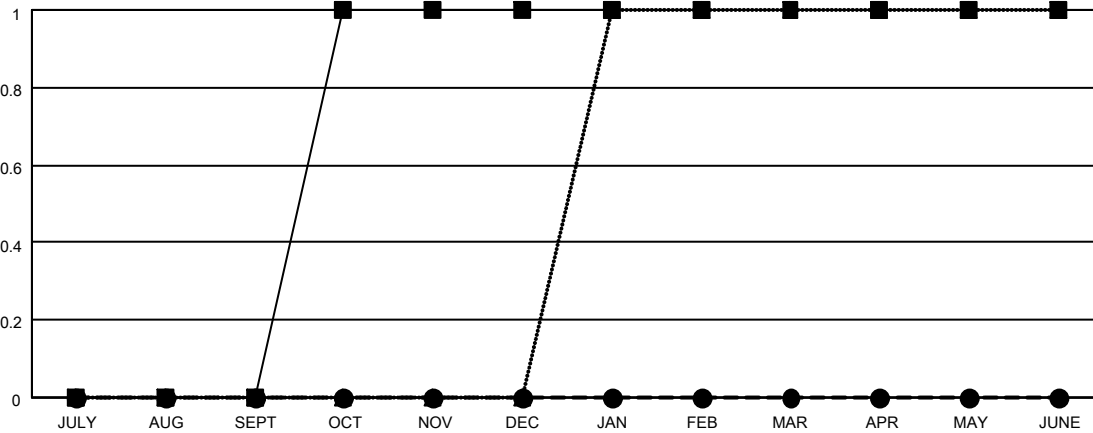
LOCATION ONTARIO

GMT CA

Clubs			
RESULTS FOR 2025-2026			
QUARTER	NEW CLUB GOAL	NEW CLUBS	DROPPED CLUBS
JULY/AUG/SEPT	0	0	0
OCT/NOV/DEC	1	0	6
JAN/FEB/MAR	0	0	0
APR/MAY/JUNE	0	0	0

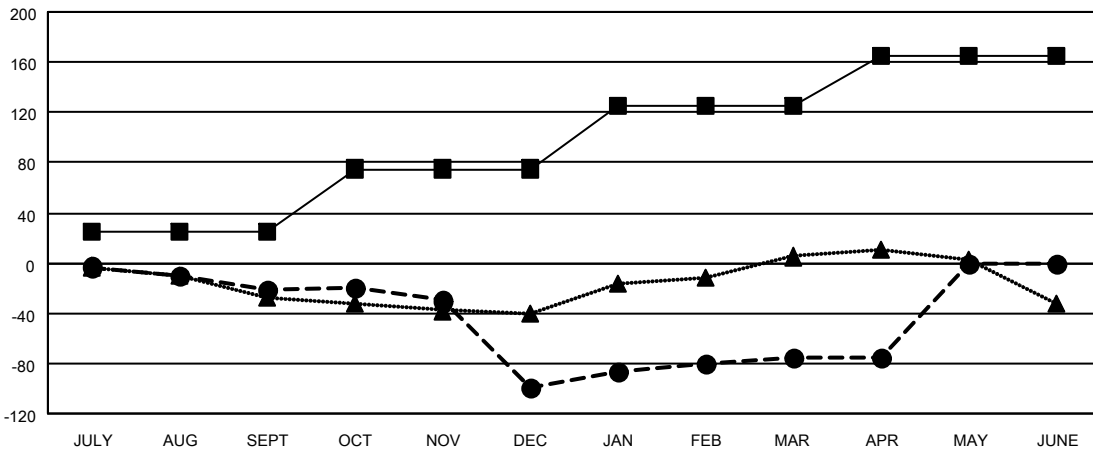
Members			
RESULTS FOR 2025-2026			
QUARTER	MEMBER GROWTH NET GOAL	MEMBER GROWTH ACTUAL	DROPPED MEMBERS ACTUAL (including transfers)
JULY/AUG/SEPT	25	23	37
OCT/NOV/DEC	50	42	110
JAN/FEB/MAR	50	87	34
APR/MAY/JUNE	40	10	8

GOALS AND ACTUAL NEW CLUBS CUMULATIVE



- - CURRENT YEAR GOALS FOR NEW CLUBS
- - CURRENT YEAR ACTUAL NEW CLUBS
- ▲ - LAST YEAR ACTUAL NEW CLUBS

GOALS AND ACTUAL MEMBERS CUMULATIVE



- - MEMBER GROWTH NET GOAL
- - MEMBER GROWTH ACTUAL
- ▲ - LAST YEAR MEMBERSHIP ACTUAL

DROPPED CLUBS: 6	34 CLUBS OF 53 ADDED 1 OR MORE NEW MEMBERS	GENDER DISTRIBUTION MALE 519 (48.28%) FEMALE 556 (51.72%)
DROPPED MEMBERS DECEASED 16 CLUB CANCELLED 62 OTHER 111 TOTAL 189	CLICK HERE FOR CUMULATIVE MEMBERSHIP DATA	TOTAL FAMILY UNIT MEMBERS 209 FAMILY MEMBERS PAYING HALF DUES 107